

FIG.# 1

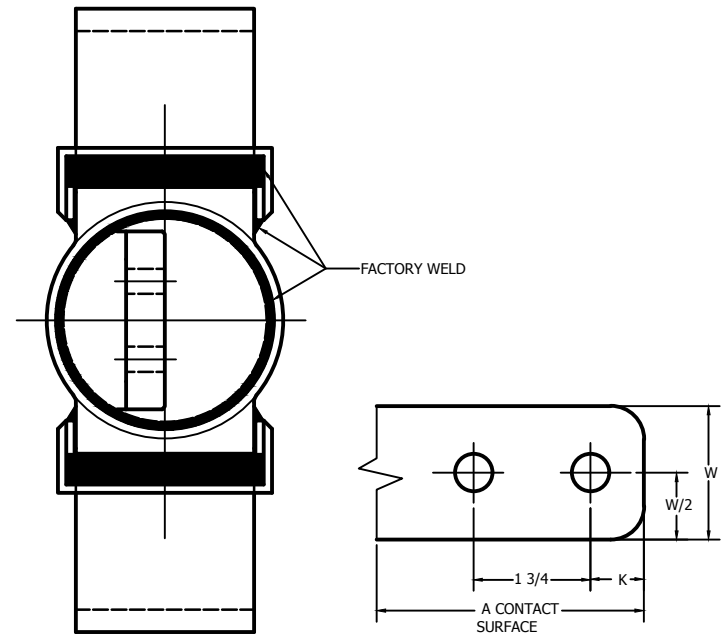
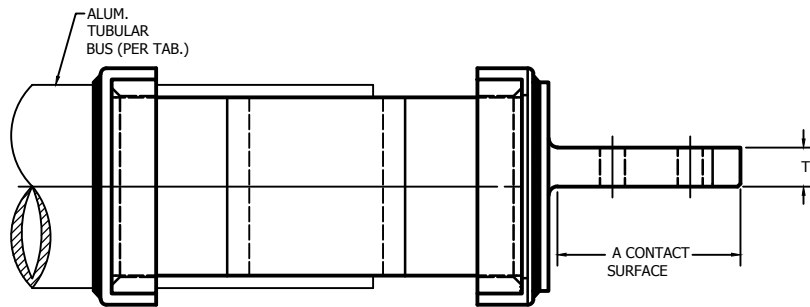


FIG.# 2



NOTES:

1. MATERIAL: CASTINGS: 356-T6 ALUMINUM ALLOY  
STRAPS: 1100-0 ALUMINUM ALLOY
2. FOR EHIPS (SCHEDULE 80) APPLICATION ADD "H"  
TO CATALOG NO. (EXAMPLE: WFTFVH-30-D)
3. TO OBTAIN TONGUE FINISHED ON BOTH SIDE  
ADD "XY" TO CATALOG NO. (EXAMPLE: WFTFV-50-D-XY)
4. DETERMINE "T" DIMENSION FROM DRAWING DC-9295.
5. MAXIMUM BUS LENGTH IS 140 FEET.

65653	05/18/16	VV	DR	HPS®		<b>HUBBELL® POWER SYSTEMS</b> TITLE <b>EXPANSION TERMINAL CONNECTOR</b> <b>ALUM. TUBE TO FLAT</b>	SIZE	DWG NO.	CAT / PART / ASSY NO.	REV		
EC #	DATE	CHG BY	RESP ENG				C	CC-12922	SEE TAB	5		
DESC OF DWG: REDRAWN IN AUTOCAD				CONFIDENTIAL: THIS DRAWING AND ITS CONTACTS ARE CONFIDENTIAL AND THE EXCLUSIVE PROPERTY OF HUBBELL POWER SYSTEMS. NO PUBLICATION, DISTRIBUTION OR COPIES MAY BE MADE WITHOUT THE WRITTEN CONSENT OF HUBBELL POWER SYSTEMS. ALL RIGHTS RESERVED UNDER THE COPYRIGHT LAWS		DO NOT SCALE THIS DRAWING	DRN BY	HDY	DATE	12-28-83	SHEET	1 OF 2
REASON (S) FOR CHANGE: DISPOSITION OF MAT'L:												